



DirecTime Retrofit

Features:

- Web-based functionality
- One-step installation
- No additional equipment required
- No local software required
- 2-year warranty
- Powder-coated aluminum
- Size: 4-3/4"W x 8-1/4" H x 1-7/8" D

Cellular-based upgrade for monitoring and controlling traffic devices

This internet-enabled Time Clock operation management device gives you advanced capabilities to monitor and control your school zone beacons, BlinkerSign LED Signs and other traffic control devices. Once activated, all ITS devices within your system are accessible via the internet.

This robust device can save you time and resources by allowing you to monitor and manage your devices, system-wide, remotely via BlinkLink™, a web-based application for remote, enterprise-wide supervision of all connected traffic control ITS devices. Use your cell phone, tablet, laptop or pc to manage your devices from any web-connected location.

The DirecTime Retrofit Controller replaces manual or pager-based time clocks simply by plugging your existing circular connector into the new DirecTime Retrofit Controller, hanging it and then mounting the attached antenna outside the cabinet.

The DirecTime Retrofit Controller utilizes cellular-based communication and thus requires no additional infrastructure investment such as radio repeaters, Ethernet connections, local radios, local wireless connections or local networks.

Simple

Unplug your old Controller and plug in TAPCO DirecTime™ Controller. Replaces manual or pager-based time clocks & upgrades capabilities. No rewiring required, just plug it in and it's ready to program. Same compact footprint as existing time clock: no extra space needed.

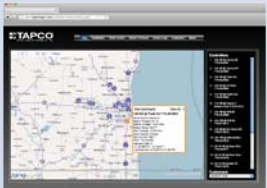
Secure

Monitor and manage your devices system-wide remotely via the internet

User-defined, permission-based internet access & control for co-workers

Affordable

BlinkLink™ access for a low monthly fee, allows you to pay as you go.



Map

- Zoomable overview of all your devices
- Mouse over locations for pop-up status
- Select devices from list



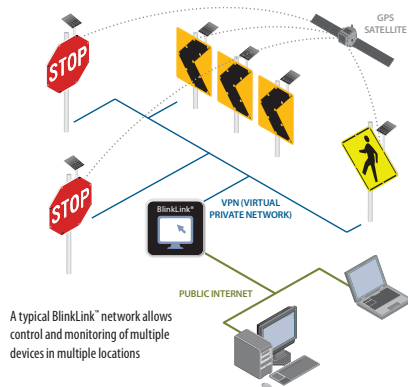
Usage Data

- View device's current events and status



Dashboard

- Each device's cell status, battery voltage, temperature, solar voltage and current
- Historic data by day, week, month and year



Monitor BlinkerSign® and other device status from any web-enabled computer. Comprehensive management of all device settings, schedules and messages. Up-to-date information allows you to respond immediately to changing situations.

User-identified E-mail & Text Alerts

Select recipients for automated e-mail or text alerts based on battery levels dropping below pre-set thresholds.

Automated Data Analysis & Reporting

- Automatic data sort provides comprehensive reports
- Easily identify positive and negative trends for actions
- Prioritize your resources with instant information
- Quickly review histories of equipment and events

Traffic Data Retrieval & Management

- Automatically upload data for recall and subsequent reporting
- Systematic data organization for convenient review

Mapping

- View your equipment on an interactive map
- Review device status, reports and modify settings

Support

- Remote startup & training
- Up-to-date status monitoring and notification of problems

Alerts

- Shows device status
- Set alert levels for automated e-mail and/or text notifications
- Choose recipient(s) and notification mode



Events

- Calendar-based event programming (8 different day types and 16 events per day)

Please contact our sales department with your project needs: 503-235-8531