



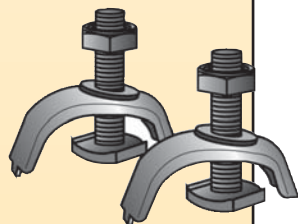
TRAFFIC SAFETY SUPPLY COMPANY

Your Traffic Sign & Supplies Resource Since 1956

SIGNFIX MOUNTING HARDWARE

In addition to standard mounting hardware, we are proud to offer SIGNFIX Engineered Modular Sign Support Systems. The SIGNFIX system was developed and extensively used in the United Kingdom before being brought to the United States. To simplify, the SIGNFIX system uses extrusions with identical channel configurations to allow the use of any SIGNFIX hardware with any extrusion. Extrusions are attached to the back of signs with rivets or 3M VHB (Very High Bond) tape. SIGNFIX mounting hardware can then be slid into the channel and secured in place.

Ideal for:
Oversize Street Name Signs
Mast Arm Signs
Informational Signs



The Nevada DOT used Signfix Large Channel with 3M VHB tape to assemble and mount this 12' x 8' sign. This 4-panel .080 gauge aluminum sign was assembled in 25 minutes and installed in less than one hour.

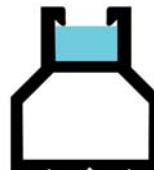
EXTRUSIONS

Medium extrusions are for signs from 3' to 18'



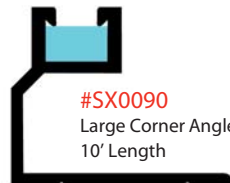
#SX0073
Medium Extrusion
10' Length

Large Extrusions are for signs from 10' to 30' wide.



#SX0130
Large Extrusion
10' Length

Large Corner Angle Extrusions are for signs 10' to 30' wide.

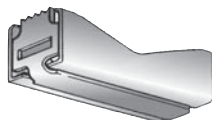


#SX0090
Large Corner Angle Extrusion
10' Length

FOR ROUND POSTS:

Universal Channel Clamp
For any diameter post attached with Band-It stainless steel band and buckle

#SX0220



FOR FLANGED POSTS:

RSJ Clamps with Lip-Lock bolt
For I-Beam or U-shaped flanged posts. Attach one to each side of post with included bolt assembly.

#SX0067



Palo Alto, California used Medium Channel and Universal Channel Clamps to offset mount this 4' x 5' guide sign. Installation time was less than 5 minutes.



These 10' wide, 18" tall signs were installed using Medium Channel and Universal Channel Clamps. Installation was less than 5 minutes per sign.

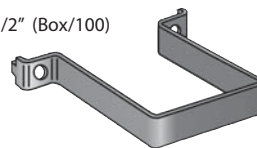
FOR RECTANGULAR POSTS:

RHS Clamps
2" X 2" (Box/100)

#SX0061

2-1/2" X 2-1/2" (Box/100)

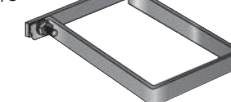
#SX0062



Heavy Duty RHS Clamp with Insert

With insert for extra strength
4-3/4" X 3-1/8"

#SX0144



These oversized guide signs were mounted to the mast arm using Signfix Medium Channel and Universal Channel clamps. The largest sign is 6' x 6'.



VHB TAPE

Available in 3/4", 1", 2" x 108 ft. (36 yds.)

3/4" x 36 yds **#16621000**

1" x 36 yds **#16621100**

2" x 36 yds **#16621200**

ACCESSORIES:

Threaded Stud

For attaching extrusions to square wood posts or pre-punched steel or aluminum posts.

5" threaded stud (box 100)

#SX0084

7" threaded stud (box 100)

#SX0085

Insert Plate (box 100)

#SX0069

Lip-Lok Bolt

Shape of head provides maximum contact with inside of extrusion channel for superior holding power.

1-7/16" bolt, nut, washer (box 100)

#SX0121

