



TRAILER MOUNT MESSAGE SIGNS

Variable message signs are the safest means for notifying motorists of changes in traffic patterns and road conditions. Variable message signs are ultra-bright and highly legible, with a variety of functions for any application—lane closures, highway construction, work zones, parking lots and more. A choice of functions and options make these signs extremely versatile.

FULL SIZE MESSAGE SIGN

Three-line message signs are capable of displaying three rows of alphanumeric characters. The three-line's highly legible, ultra-bright LEDs display your message clearly. Unsurpassed quality, engineering and value, paired with a multitude of functions and options, make these signs perfect for a wide variety of applications. Full Matrix display also available.

FEATURES AND BENEFITS

- Full-size signs weigh less than 3000 pounds and can be towed by most vehicles
- Standard tow hitch for easy transport
- Hydraulic lift or heavy-duty hand-winch allows one person to easily raise and lower the message board
- Tower rotates 360 degrees for optimal positioning
- Single disk brake holds board in place during operation, and a cradle supports and holds board in travel position

Operational features

- Self-contained onboard computer does not require a laptop or external controller
- Easiest programming in the industry for simple deployment
- Preprogrammed text messages, symbols and graphics
- Quick-reference instructions silkscreened on control panel include most commonly performed tasks
- Internal clock facilitates built-in schedule programming
- Multiple alphanumeric fonts on matrix signs make messages clear and legible
- Optical lenses and sunshades increase visibility and performance
- Wide footprint provides stability in high wind, while optional outriggers add even more support
- Multi-level password protection limits access to control software
- Control box can be locked to prevent unauthorized access

Power system

- Energy-efficient operation results in long run times
- Solar panels charge batteries automatically without intervention
- Computer shuts down solar-panel charging system when batteries are fully charged, preventing damage
- Unique system allows battery charging with solar panels and commercial power
- Cooling fans protect sign cabinet and battery charger from overheating
- Battery box can be locked to prevent unauthorized access

Maintenance

- Individual character modules can be replaced easily
- Standard 15-inch trailer tires
- Heavy-duty bolt-on steel fenders can be replaced if damaged
- Durable powder-coat finish resists the elements

Standards compliance

- NTCIP compliant
- Meets MUTCD
- AASHTO (NTPEP) tested

#14200400

Full Matrix #14200500



BRIEF SPECIFICATIONS

Deployed footprint, L x W	186 x 126 in.
Sign cabinet size, W x H	138 x 75 in.
Operating height	159 in. 404 cm
Traveling height	107 in. 272 cm
Weight, approx.	2640 lbs. 1193 kg
Tires	15-inch
Display: matrix signs	48 x 27 pixels (W x H)
Display: three-line signs	3 lines, 8 characters per line
Power	Batteries, solar, optional diesel

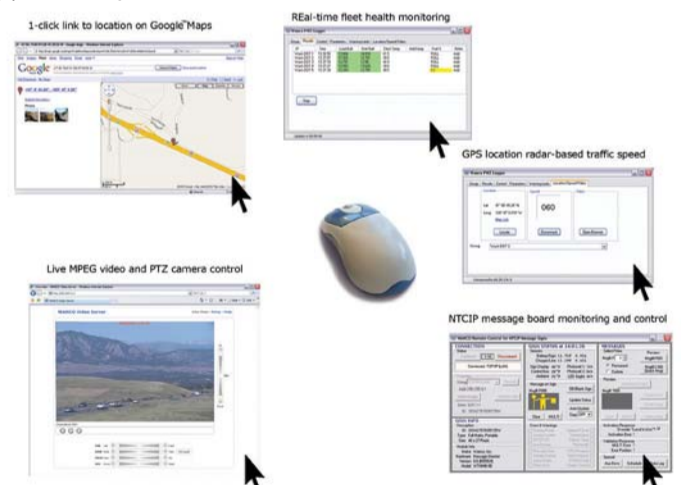


REMOTE MONITORING SYSTEM

The Remote-Video Monitoring System (RVMS) adds video monitoring and remote-access capability to these message signs. The system provides remote control of both the camera and the sign. Monitor traffic, change the message displayed on the sign, and control the day/night pan-tilt-zoom camera using your computer's Web browser.

Features and Benefits

- Communication with the Remote-Video Monitoring System (RVMS) is made possible via a computer, an Internet connection, and a cellular router installed at the message sign or any Internet enabled location
- Connect from the comfort of your office, a central command center,
- With client software installed, you can access and control the RVMS video camera, message sign and accessories
- Modify the message displayed on the sign; check power levels; pan, tilt, and zoom the video camera; access radar and GPS data, and more—all without leaving your chair
- The camera tower and message board can be raised and lowered independently, allowing you to use either one without the other turned on
- The camera tower retracts fully, and the message board rests in a cradle when lowered, guarding against damage during transport and storage



MINI ADJUSTABLE GRAPHIC (MAG) SIGN



The MAG trailer has a removable tongue, hand-winch mast and NTCIP controller. A lockable, heavy-duty steel control/battery box is sealed with durable weather stripping and provides easy access to the hand held sign controller. The Mini Adjustable Graphic MAG sign is a compact, 3 line, 8 character per line sign displaying 12 inch high characters (default). It uses the same size trailer as an arrow board making it just as easy to deploy and handle. It's very popular for inner city and municipal road projects as well as special events. It can also display full size graphics and can be remotely controlled, with an additional modem option.

Steel Control & Battery Boxes

- Lockable
- Metal boxes
- Sealed weather stripping
- Non-slip treads on top
- Easy control access
- Tongue jack

Control Panel

- Streamlined instrument layout
- See only the controls you need
- Easy Programming Guide

#14200450

Trailer Dimensions

Width	68"
Length with hitch	116"
Operating height	138"
Transport height	90"
Ground clearance	12.5"
Gross Weight	1,800 lbs.

Message Panel Dimensions

Height	44.5"
Width	88.5"
Depth	2.25"

Easy to Position!